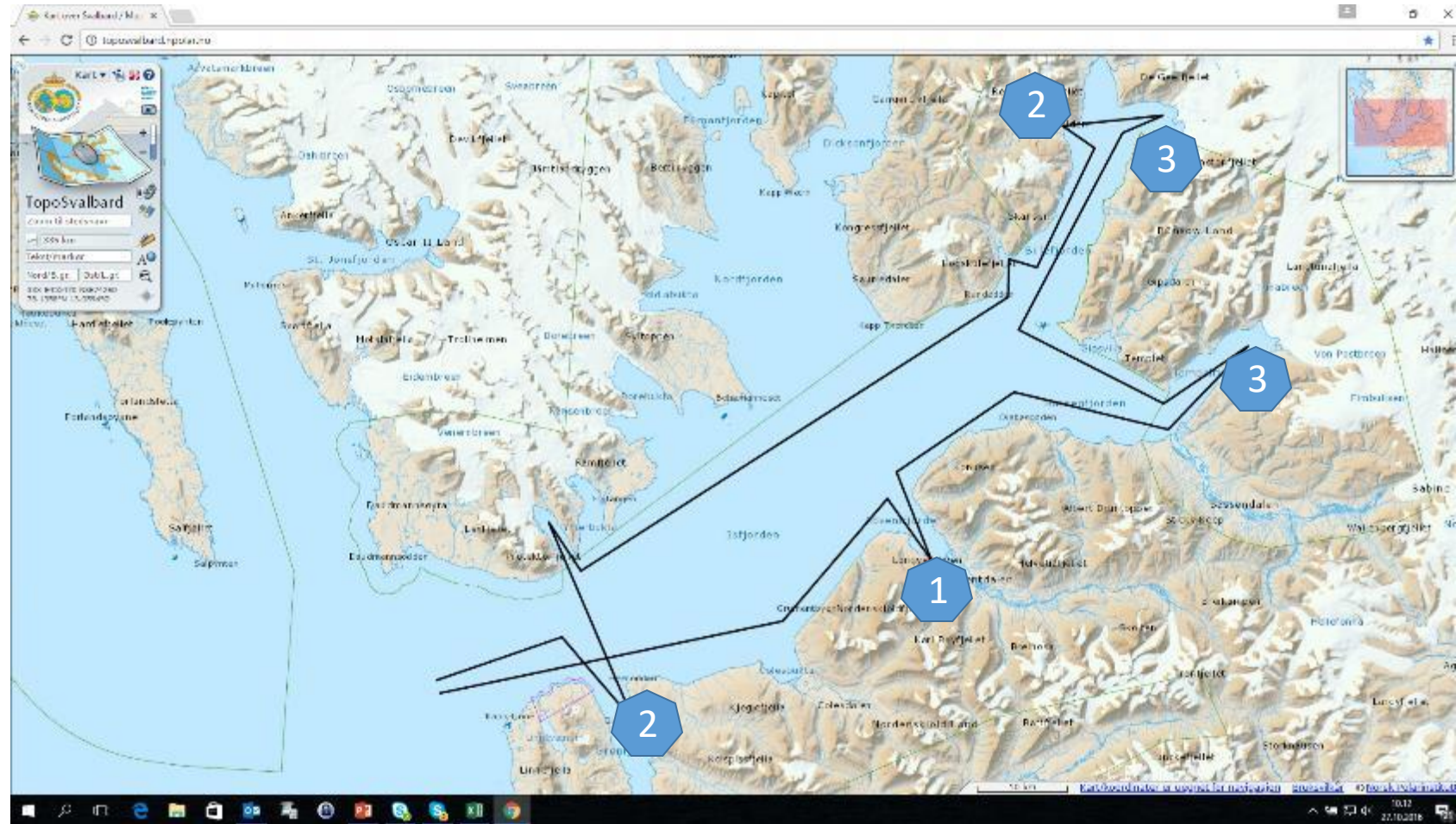


# Slow cruising Isfjorden

1. Longyearbyen, the old company town with a choice of shore exc opportunities
  - dog sledding on wheels, rib boat safari, bird watching, fossil hunting, visit coal mines, tastes of local produces
2. The Russian Settlements
  - Pyramiden, the ghost town, left as it was in 1998
  - Barentsburg, the only Russian settlement still operating
3. Landings
  - Kapp Napier by Brucebyen
    - Cultural heritage site, mining industry
  - Kapp Schoulz in Tempeljorden
    - Cultural heritage site, trappers life



# Slow Cruising in Isfjorden

- More attractions in the Isfjord region give the cruise guests a richer and more diverse experience
- Commercial opportunities with guide on board
  - Lectures on board
  - Sightseeings and tours on shore
  - Landings at cultural heritage sites
- Flexibility in logistics and access to piers





Visit Svalbard

# Longyearbyen



- dog sledding on wheels
- polar cirkel boat safari
- bird watching
- fossil hunting
- visit coal mine
- Taste of Svalbard local produces
- hiking on the tundra
- Arctic art & architecture
- local living
- photo safari with a local enthusiast
- bird watching in the Advent delta



# Barentsburg

- Tender to floating pier
  - Floating pier 19 m x 5 m
- Bus
  - Two buses with capacity 35 pers each
  - The buses shuttle 500 m bus ride to where sightseeing starts
- Guide
  - 9 local guides
  - English, German, French language
- Catering
  - Barentsburg Hotel, 80 seats
  - Red Bear Brewery, 80 seats
- Excursion & activities
  - Excursion around town + visit to Pomor museum , approx 1.5 hr, coffee & Russian bakery in Restaurant Barentsburg
  - Classes in Russian Handicrafts, appr.1.5 hr
  - Visit to the mine, appr. 2 hr
  - Trekking/ kayak / fat-bike/ dog-sledge tours in the surroundings, appr. 1.5 - 2.5 hr
  - Folkshow in the Cultural Centre, 330 seats
  - Visit to Dog Farm



# Pyramiden

- Tender to floating pier
  - Floating pier 19 m x 5 m
- Bus
  - Two buses with capacity 25 guests each
  - The buses shuttle 600 m bus ride to where sightseeing starts
- Guide
  - 9 local guides
  - English, French, German language
- Catering
  - Restaurant Tulpan, 60 seats
  - The Cantine, 80 seats
- Excursion & activities
  - Excursion around the ghost town with possibility to visit "conserved" buildings appr. 1 hr, coffee & Russian bakery in Restaurant Tulpan, souvenir shop
  - Guided walking tour to the Bottle House, appr. 1.5 hr, coffee & Russian bakery in Restaurant Tulpan
  - Fat-bike/ kayak/ trekking tours in the surroundings, approx. 1,5 – 2,5 hrs
  - Boat tour to Nordenskiöld glacier, 10 seats



# Polar cirkel boat

- Capacity
  - 8 boats
  - 11 persons per boat
- Equipment
  - Floating suit, life vest, goggles
- Speed
  - 15-25 knots
- Embarking/disembarking
  - On the beach, from the bough with stairs
- Værforbehold





Visit Svalbard

# Landing 1 Longyearbyen - Tempelfjord



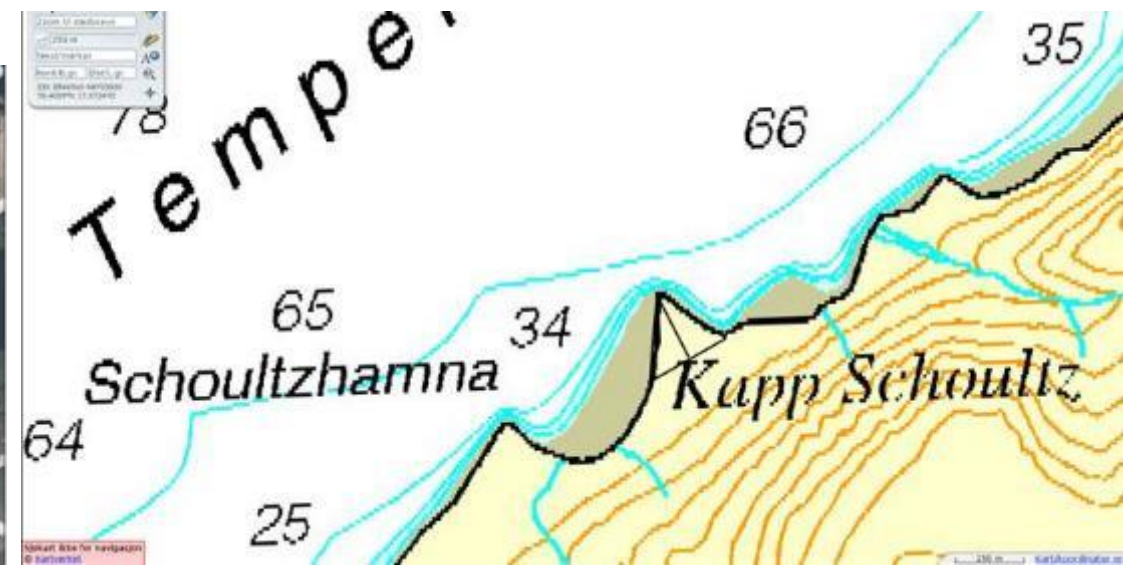
- From Longyearbyen to Tempelfjorden
  - Parallell with cruise vessel into Tempelfjorden
    - go onboard polar cirkel boat on cruise pier in Longyearbyen when cruise vessel sails
    - Closer to shore and sea, photo op's of cruise vessel from all angles
    - Landing at Kapp Schoultz with local guides and polar bear protection
    - Pick up ice from the Tuna/vonPost glaciers
    - Board the cruise vessel in Tempelfjorden
  - Distance
    - 33 nm
  - Duration
    - Minimum 3,5 hours
      - 1,5 hrs boat ride
      - 1 hour landing
      - 1 hour cruising in front of glacier
  - Capacity
    - 8 boats with 11 persons each
  - Catering
    - Possible to serve food and drinks



# Landing site Kapp Schoultz, Tempelfjord

- with local guides and polar cirkel boats

- A protected cultural heritage site
  - geology, mining, wildlife, glacier, trappers life
- Possible to serve food and drinks
- Perfect beach for a swim in the fjord at 78° North
- Capacity up to 1 000 people
- Need for at least three polar bear guards





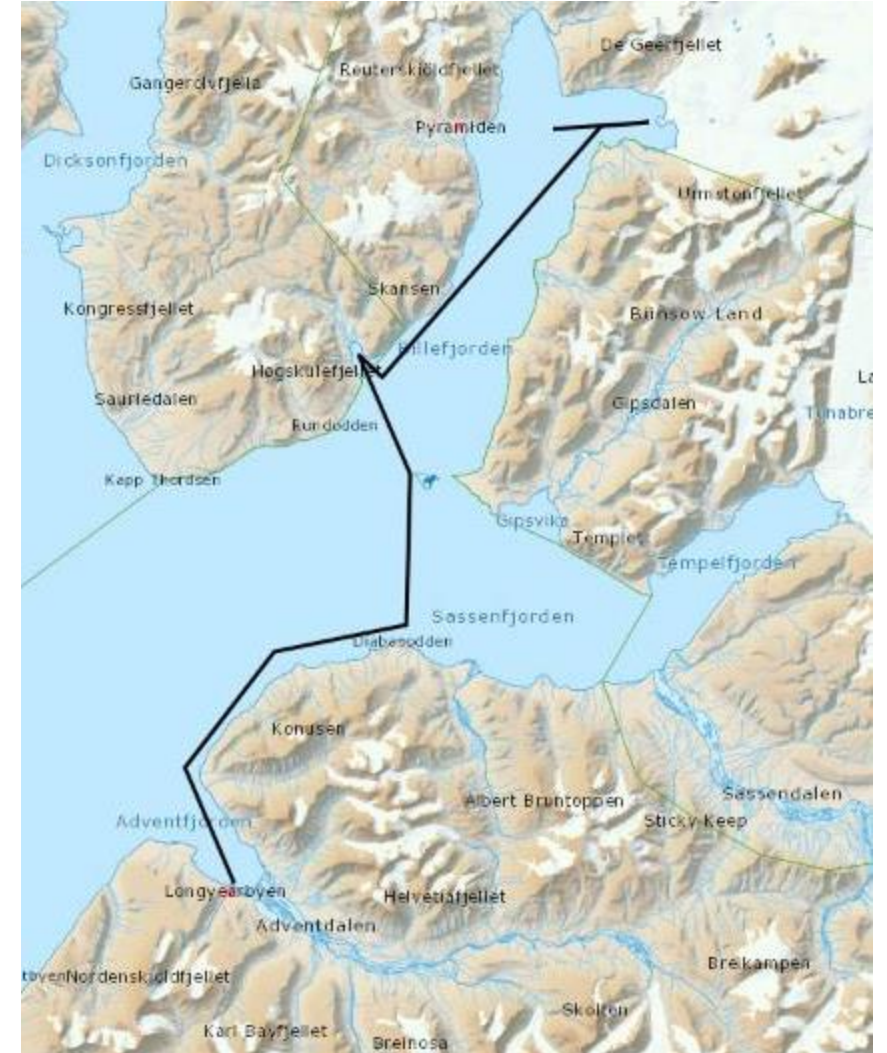


Visit Svalbard

# Landing 2 Longyearbyen - Billefjorden



- From Longyearbyen to Billefjorden and Pyramiden
  - Parallell with cruise vessel into Billefjorden
    - go onboard polar cirkel boat on cruise pier in Longyearbyen when cruise vessel sails
    - Closer to shore and sea, photo op's of cruise vessel from all angles
    - Landing at Kapp Napier with local guides and polar bear protection
    - Pick up ice from the Nordenskiöld glacier
    - Board the cruise vessel in Billefjorden
  - Distance
    - 41 nm
  - Duration
    - Minimum 4 hours
      - 2 hrs boat ride
      - 1 hour landing
      - 1 hour cruising in front of glacier
  - Capacity
    - 8 boats with 11 persons each
  - Catering
    - Possible to serve food and drinks



# Landing site Kapp Napier, Billefjord

- with local guides and polar cirkel boats

- A protected cultural heritage site
  - geology, mining, wildlife, glacier, trappers life, Russian settlements
- Possible to serve food and drinks
- Perfect beach for a swim in the fjord at 78° North
- Capacity up to 700 people
- Need for at least five polar bear guards





Visit Svalbard

# Landing 3 Longyearbyen - Barentsburg

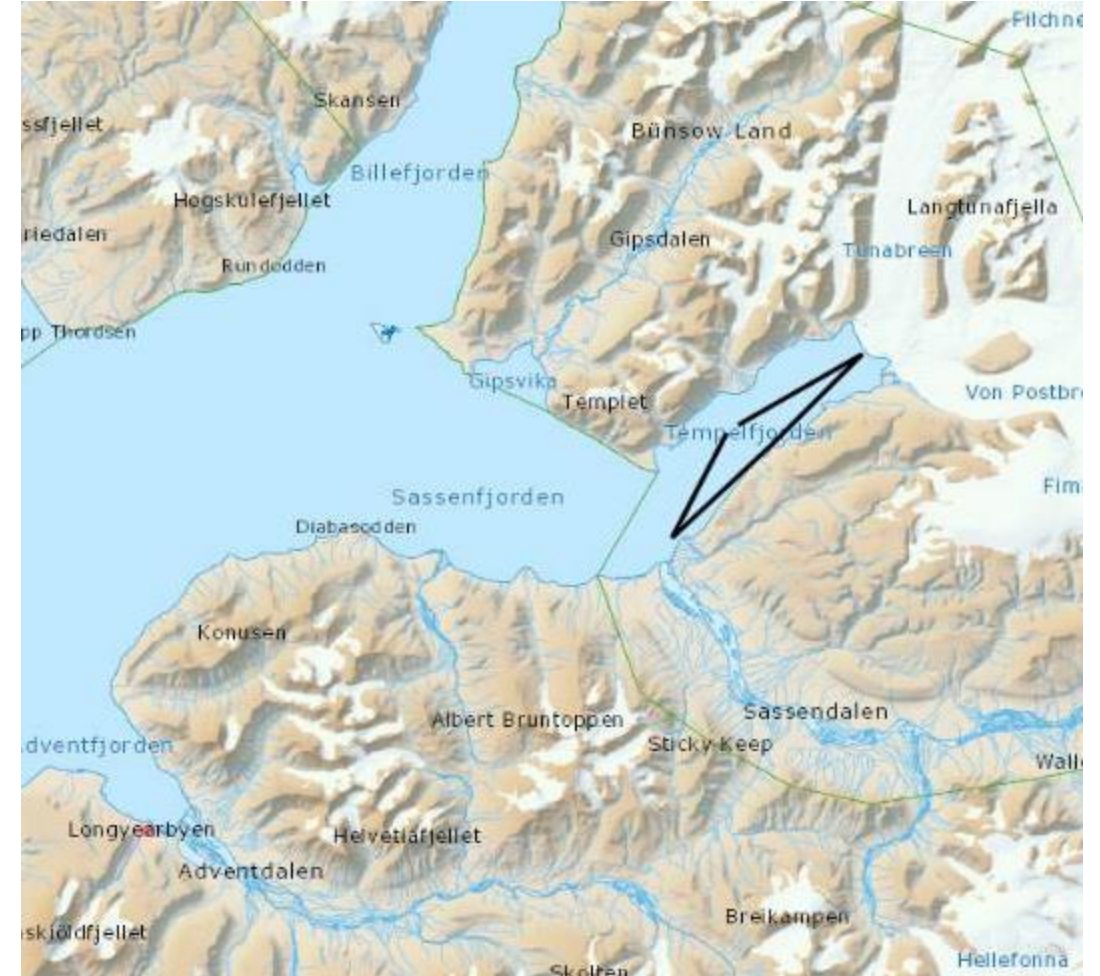


- From Longyearbyen to Barentsburg
  - Parallell with cruise vessel into Grønfjorden and Barentsburg
    - go onboard polar cirkel boat on cruise pier in Longyearbyen when cruise vessel sails
    - sail closer to shore and sea, photo op's of cruise vessel from all angles
    - sail past Grumant, Coles Bay, Festningen and into Barentsburg
    - board the cruise vessel in Grønfjorden
  - Distance
    - 36,7 nm
  - Duration
    - Minimum 3,5 Hours
      - 1,5 hrs boat ride
  - Capacity
    - 8 boats with 11 persons each
  - Catering
    - Possible to serve food and drinks



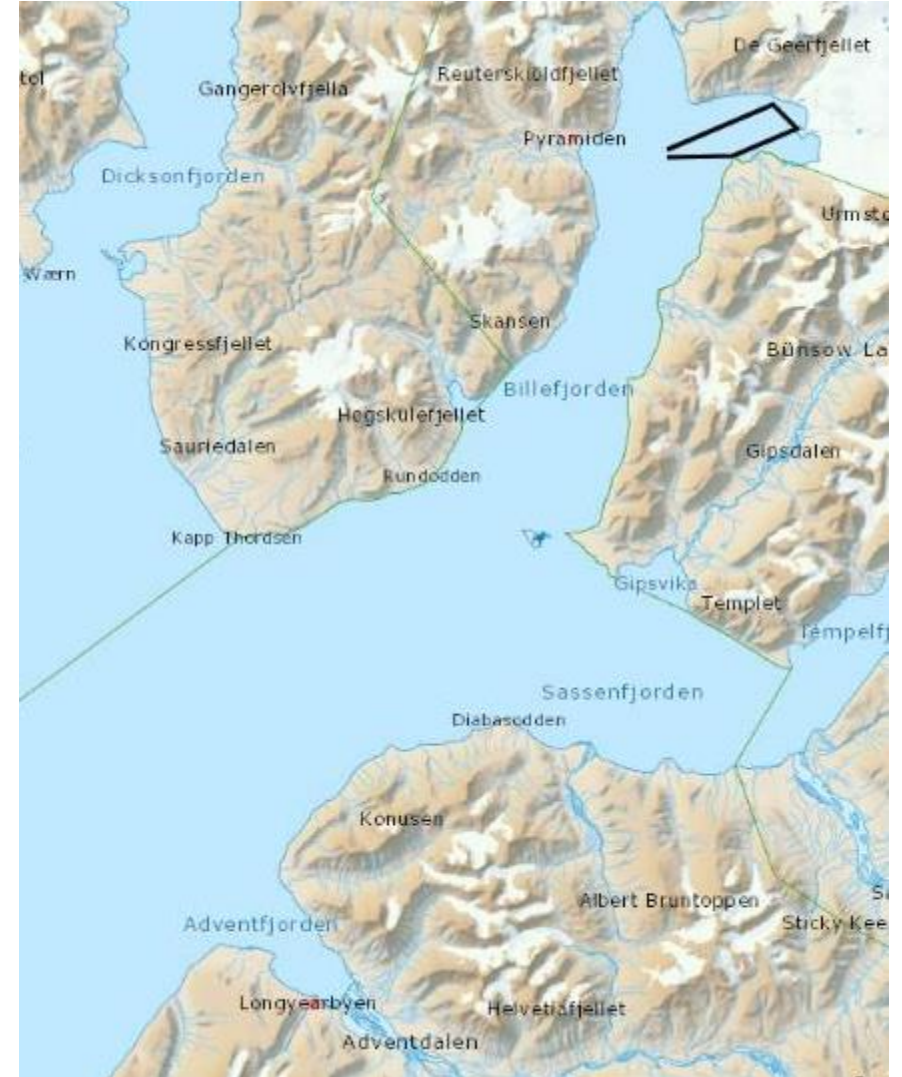
# Landing 4 Tempelfjorden

- In Tempelfjorden
  - cruise around Tempelfjorden
    - Board polar cirkel boat from cruise vessel in Tempelfjorden
    - Sail past the old trappers lodge Fredheim
    - Landing at Kapp Schoultz with local guides and polar bear protection
    - Pick up ice from the Tuna/vonPost glaciers
    - Board the cruise vessel in Tempelfjorden
  - Duration
    - Minimum 2 hours
  - Capacity
    - 8 boats with 11 persons each
  - Catering
    - Possible to serve food and drinks



# Landing 5 Billefjorden

- In Billefjorden and Adolfbukta
  - cruise around Adolfbukta
    - Board polar cirkel boat from cruise vessel in Billefjorden
    - Landing at Kapp Napier with local guides and polar bear protection
    - Pick up ice from the Nordenskiöld glacier
    - Board the cruise vessel in Billefjorden
  - Duration
    - Minimum 2 hours
  - Capacity
    - 8 boats with 11 persons each
  - Catering
    - Possible to serve food and drinks





Visit Svalbard

# Landing 6 Isfjord Radio



- From Barentsburg to Isfjord Radio
  - When the ship is drifting in Grønfjorden by Barentsburg
    - go onboard polar cirkel boat on cruise pier in Grønfjorden
    - sail past Festningen and Russekeila to Isfjord Radio
    - Visit the Isfjord Radio <http://www.visitsvalbard.com/en/IsfjordRadio>
      - Situated on the outermost part of the Isfjord on the beautiful Nordenskiöld coast framed by majestic mountains and overlooking the open sea, you will discover Basecamp Isfjord radio. Until a few years ago, the radio station was an important connection for telecommunication between Svalbard and the rest of the world. The area surrounding the radio station has an exceptional animal life and a bird sanctuary where we find nesting birds right up to the station's walls. In addition to all the different species of birds, you might also see reindeers, polar foxes and if you are lucky, it may be possible to spot the King of the Arctic ---- the polar bear! Our host will welcome the guests at the harbor and will give you a guiding of the station and the beautiful surroundings. With its exotic location, far from the civilization in Longyearbyen, you can enjoy the silence and greatness of the Svalbard nature. Sail back and board the cruise vessel in Grønfjorden
- Distance
  - 18,1 nm
- Duration
  - Minimum 4 Hours
    - 2 hrs boat ride (return)
- Capacity
  - 8 boats with 11 persons each
- Catering
  - Possible to serve food and drinks





Visit Svalbard

# Contact information



## Local tour operators

- Basecamp Spitsbergen <http://www.basecampexplorer.com/spitsbergen/>
- Grumant Travel Company <http://www.goarctica.ru/>
- Hurtigruten Svalbard <http://www.spitsbergentravel.no/start/>
- Spitzbergen Adventures <http://spitzbergen-adventures.com/>
- Svalbard Adventure Group <http://svalbardbooking.com/>
- Svalbard Wildlife Expeditions <http://www.wildlife.no/>

## Local ship agent

- Pole Position Logistics <http://www.pole-position.no/>

## National tour operators

- European Cruise Service <http://www.europeancruise.no/>
- Nordic Cruise Services <https://www.nordiccruise.no/>

